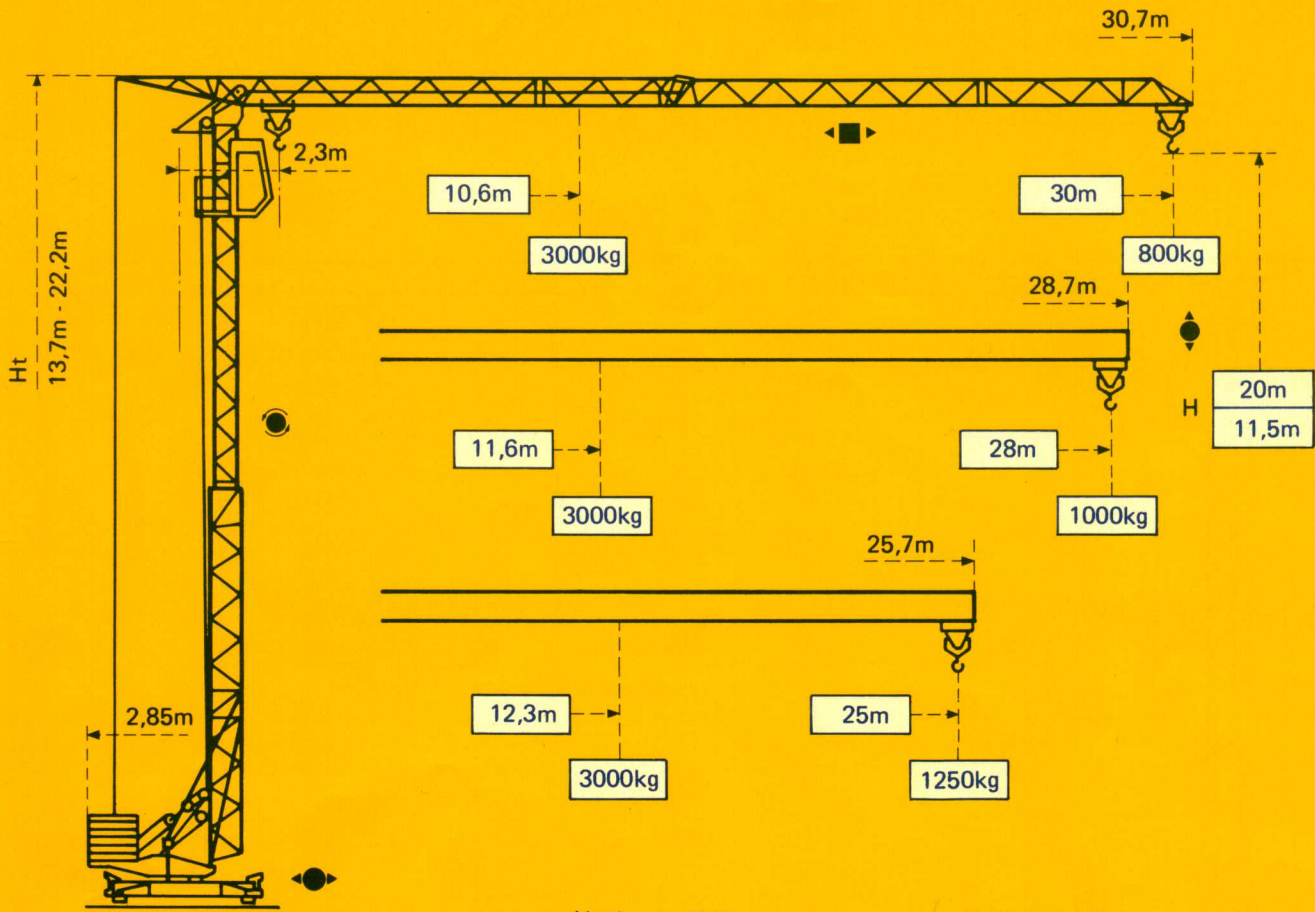


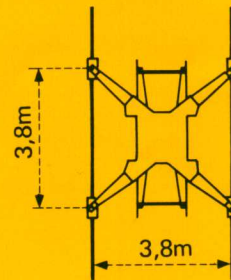
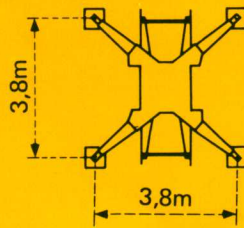
GMR 326 C

POTAIN 




Version sur vérins
Ausführung auf Abstützspindeln
Jacks version
Versión sobre gato


Version voie droite
Ausführung gerade Schienenbahn
Straight track version
Versión vía recta




F1 = Réactions *Eckdrücke* Reactions *Reacciones*

F1	● 14,8t	■ 8,7t
	10,7t	


● En service
■ Hors service

 A vide sans lest ni train de transport, avec flèche et hauteur maximum.


● In Betrieb
■ Ausser Betrieb

 Ohne Last, Ballast und Transportachse, mit Maximalausleger und Maximalhöhe.

● In service
■ Out of service

 Without load, ballast or transport axles, with maximum jib and maximum height.

● En servicio
■ Fuera de servicio

 Sin carga, sin lastre, ni tren de transporte, flecha y altura maximas.

Courbes de charges

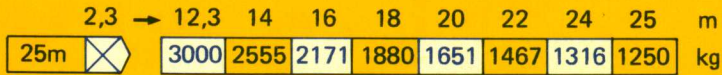
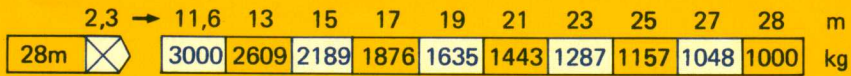
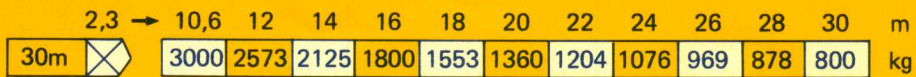
Lastkurven

Load diagrams

Curvas de cargas



Flèche Ausleger Jib Flecha

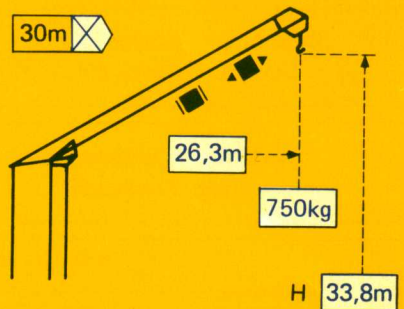
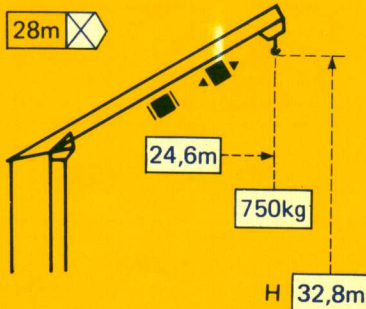
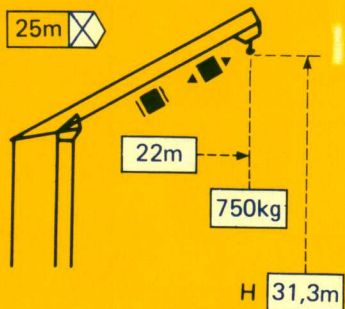


Flèche relevée

Ausleger in Steilstellung

Luffing jib

Flecha izada



■ 2D2V2

Chariot bloqué (toutes positions sur flèche)
Verriegelte Laufkatze
Trolley locked
Carro bloqueado

◄ 2D1V2

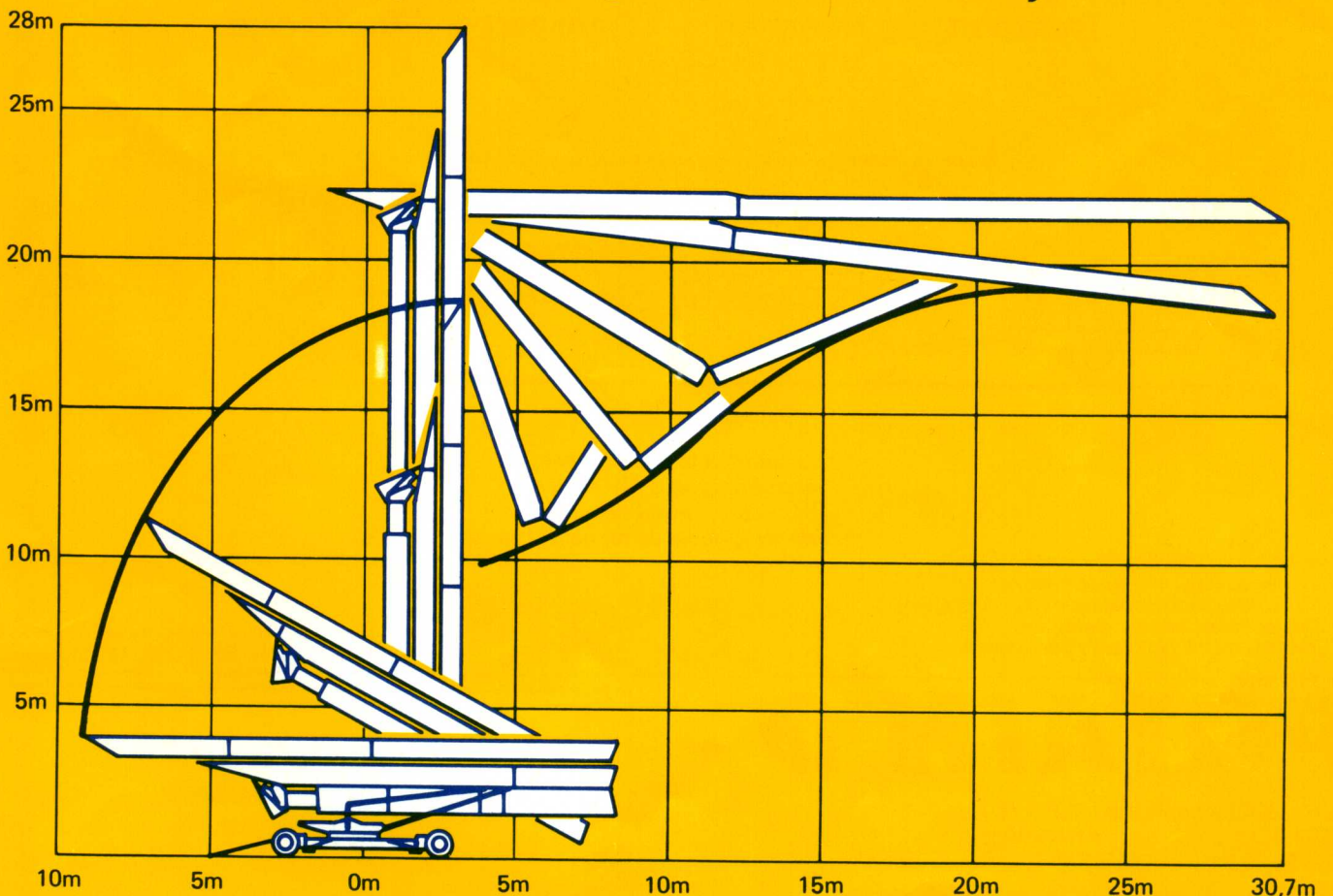
Chariot distributeur
Verfahrbare Laufkatze
Traversing trolley
Carro distribuidor

Montage

Montage

Erection

Montaje







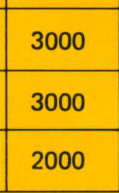
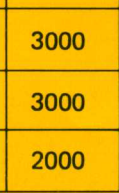
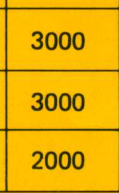
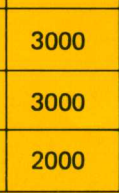















Mécanismes

Antriebe

Mechanisms

Mecanismos

				m/min	kg	ch-PS hp	kW				
Levage Heben Hoisting Elevación	15 TDPC 10 			8	1500	5	3,7				
				25	1500	15	11				
				50	1000						
				4	3000					5	3,7
				12,5	3000					15	11
				25	2000					15	11
Distribution - Katzfahren Trolleying - Distribución		2 D1 V2	35								
		2 D2 V2	14 - 42					4	3		
Orientation - Schwenken Slewing - Orientación		RCV 20	0 → 1 tr/min U/min-rpm								
		TVD 121	25					2 x 1,4	2 x 1		

Réseau - Netzstrom - Mains supply - Red	380V - 50 HZ
Puissance électrique nécessaire - Anschlusswert - Necessary electric power - Potencia eléctrica necesaria	20 KVA
Groupe électrogène - Stromaggregat - Generator set - Grupo electrogeno	*

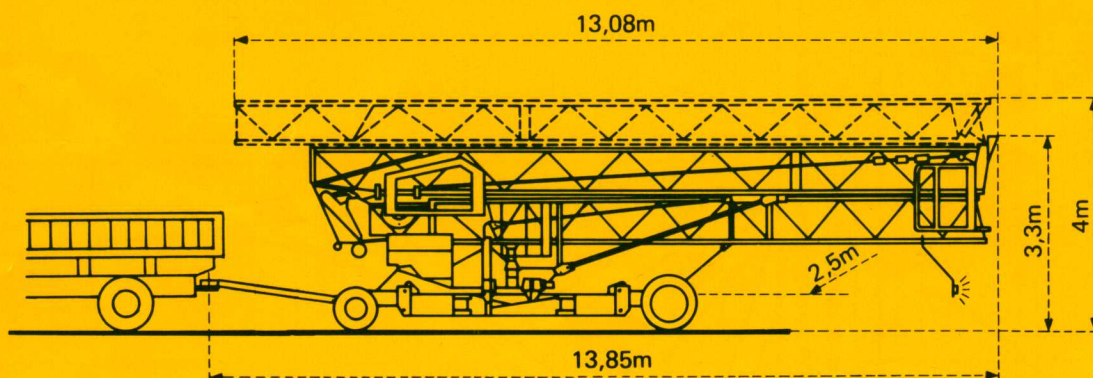
*Nous consulter - Auf Anfrage - Consult us - Consultarnos

Transport

Transport

Transport

Transporte



Version tractée derrière camion
 Ausführung als LKW Anhänger
 Lorry towed version
 Versión remolcable detrás de un camión

Version semi-portée : Nous consulter
 Ausführung als Sattelaufleger : Auf Anfrage
 Tractor towed version : Consult us
 Versión en semi-remolque : Consultarnos

NF E 52081 - 82 DIN 15018 H1 B3

POTAIN 

18, rue de Charbonnières - B.P. 173 F
 69132 ECULLY Cedex - FRANCE
 Tél. : 78.33.81.81 - Télex 330 179 - Télex Export 375 213 F
 POTAIN GmbH 6082 MÖRFELDEN WALLDORF
 Nordendstr. 79-87 - Postfach 420
 Tél. : 06 105 704.0 - Télex 4.1857 45



Stirnemann AG
Baumaschinen
 4600 Olten
 Telefon 062 / 33 95 11
 ab 4.11.95: 062 / 205 95 11

GMR 326 C

Réf. 1986.51 KRU 1

Modificaciones reservadas Änderungen vorbehalten Subject to modification Modificaciones reservadas

Printed in France